



TITLE (HARD RETURN)
SECOND LINE IF NEEDED

12.22.2014 | PREPARED FOR XXXXXX (HARD RETURN)
SECOND LINE IF NEEDED



**Method
Design**

January 26, 2014

Name Lastname
1234 Address
Street Town, State O1234

Dear Mr. Lastname,

Lorem ipsum dolor sit amet, consectetur adipiscing elit. Mauris id tincidunt tellus. Vestibulum eu urna placerat, semper tortor tempus, rhoncus diam. Pellentesque porttitor nisl nec hendrerit elementum. Quisque ultrices augue nunc. Vestibulum in malesuada nunc. Fusce blandit nulla nisi, sed iaculis augue fermentum non. Quisque vestibulum ligula et nisi vulputate, id blandit neque pharetra ex vecru tiv.

Aliquam vel egestas odio. Cras fringilla vel dolor vel dignissim. In aliquet dignissim enim, in vestibulum velit lacinia ac. Nulla facilisi. Pellentesque eu sodales nisi, ut porttitor mauris. Sed eu tellus eget nulla pharetra fermentum pharetra eget risus. Aliquam erat volutpat. Cras adipiscing nisl ac quam lacinia, quis pellentesque felis venenatis. Pellentesque diam nibh, elementum ac justo id, sagittis dignissim justo. Curabitur non placerat magna, ac facilisis magna. Donec id dignissim elit, a accumsan sem. Curabitur eu eros ut ipsum aliquet convallis ac vel turpis. Aenean elementum eget nunc eu elementum. Nam pulvinar erat vitae sagittis porta. Integer in ultrices sem, aliquet pretium nibh.

Sincerely,

Demetrios Comodromos, RA
PARTNER

Reese J Campbell
PARTNER

377 Park Avenue South #2
New York, New York 10016

ph 212.203.5524
fax 212.625.2502

methoddesign.com



ABC TITLE (START TYPING WITH ABBREV.
FIRST, IT WILL BOLD THE THREE LETTERS
AUTOMAGICALLY)

Credits

TYPE

XXXXX

LOCATION

XXXXXX

SCOPE OF WORK

XXXXX

ARCHITECTURE

XXXXX

ENGINEER CONSULTANTS

XXXXXXX

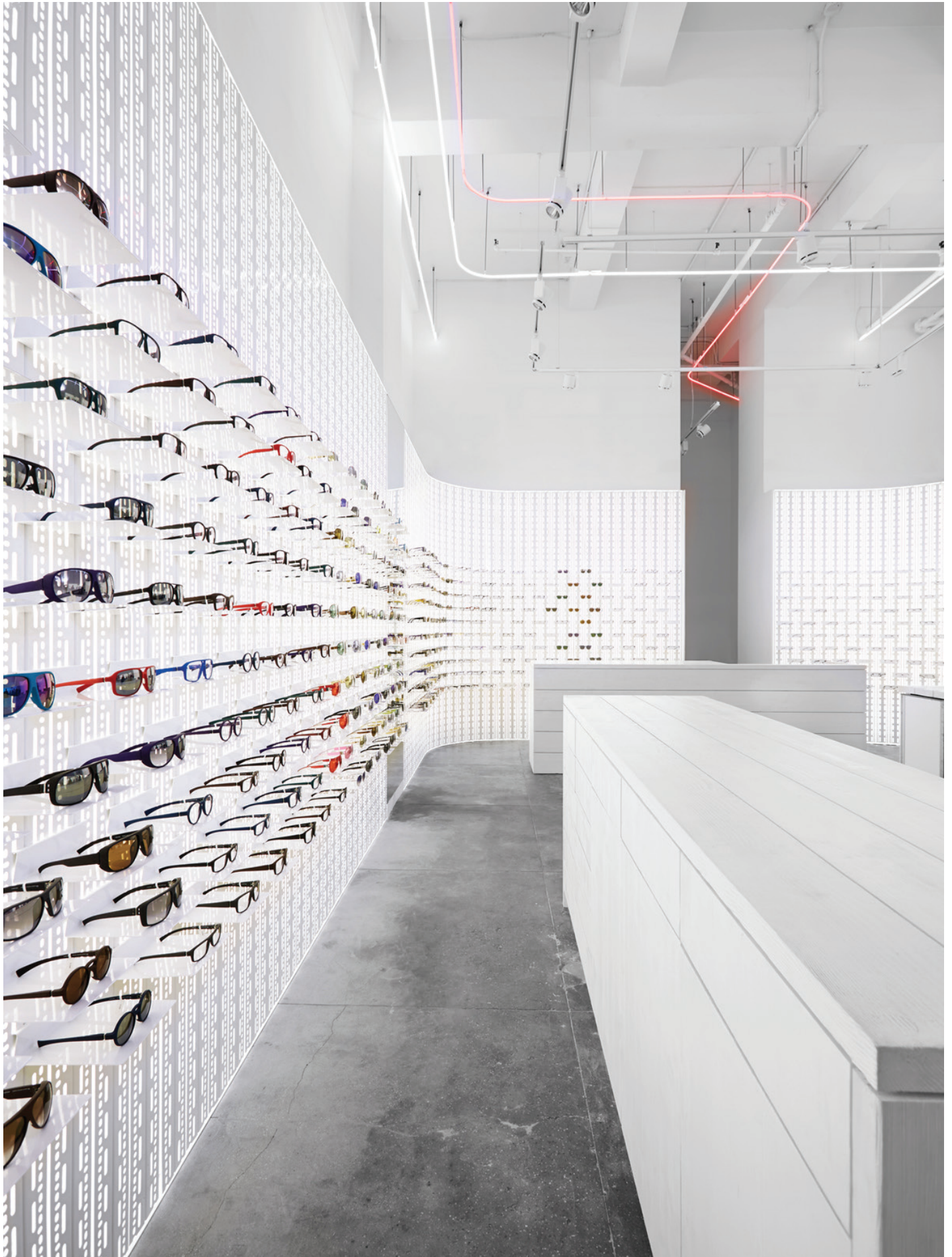
BUILDER

XXXXXXX

NOTE:

A hard return (shift-enter) will turn off
"BOLDED"category text to reveal Proxima Nova
Regular. Hit a regular "enter" to start another category
in bold. Delete this text, obviously.







ABC TITLE (START TYPING WITH ABBREV.
FIRST, IT WILL BOLD THE THREE LETTERS
AUTOMAGICALLY)

Credits

TYPE

XXXXX

LOCATION

XXXXXX

SCOPE OF WORK

XXXXX

ARCHITECTURE

XXXXX

ENGINEER CONSULTANTS

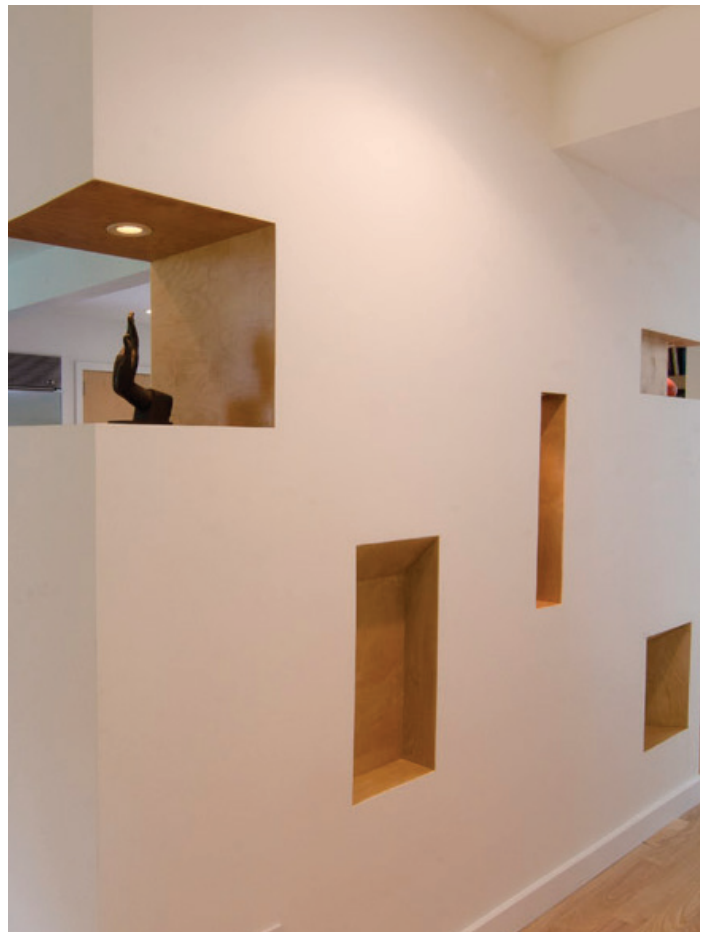
XXXXXXX

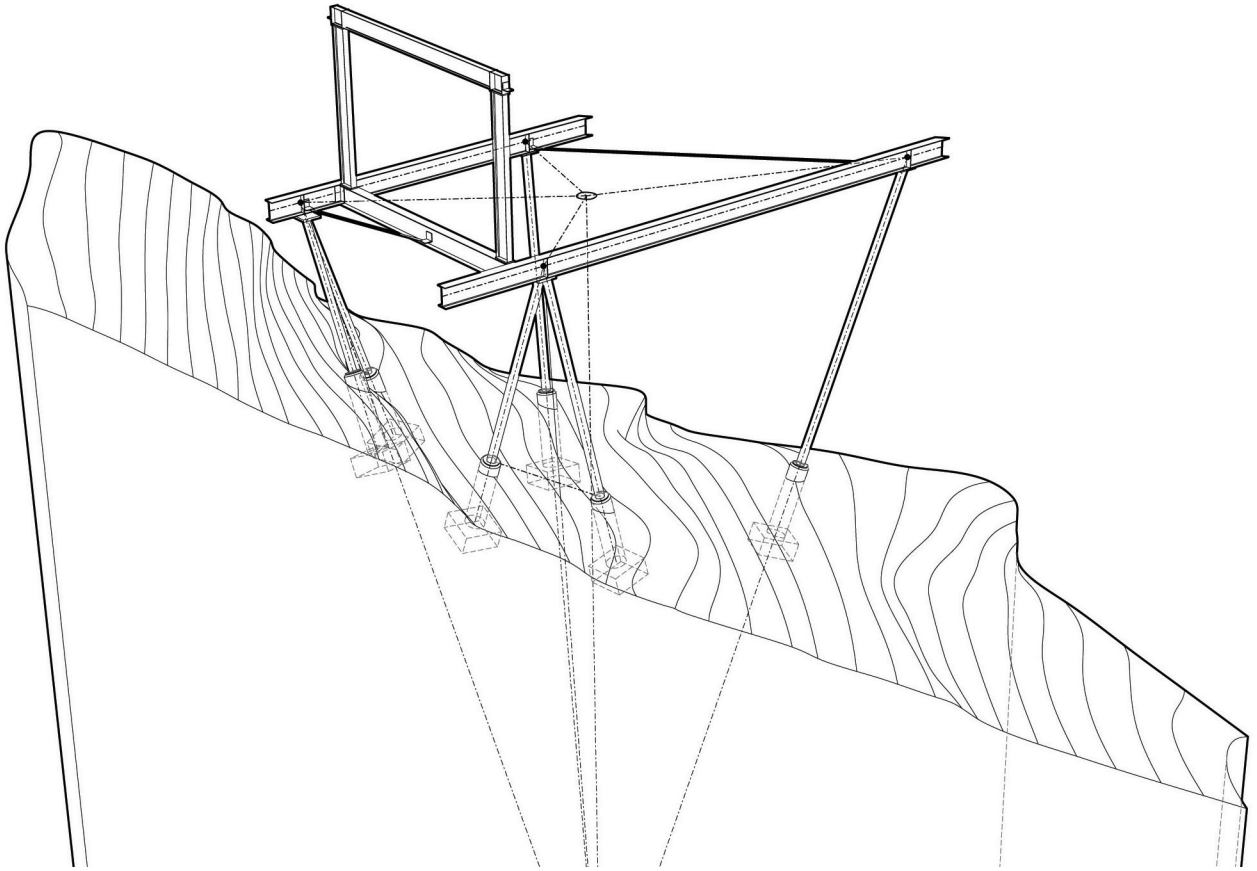
BUILDER

XXXXXXX

NOTE:

A hard return (shift-enter) will turn off
"BOLDED"category text to reveal Proxima Nova
Regular. Hit a regular "enter" to start another category
in bold. Delete this text, obviously.







ABC TITLE (START TYPING WITH ABBREV.
FIRST, IT WILL BOLD THE THREE LETTERS
AUTOMAGICALLY)

Credits

TYPE

XXXXX

LOCATION

XXXXXX

SCOPE OF WORK

XXXXX

ARCHITECTURE

XXXXX

ENGINEER CONSULTANTS

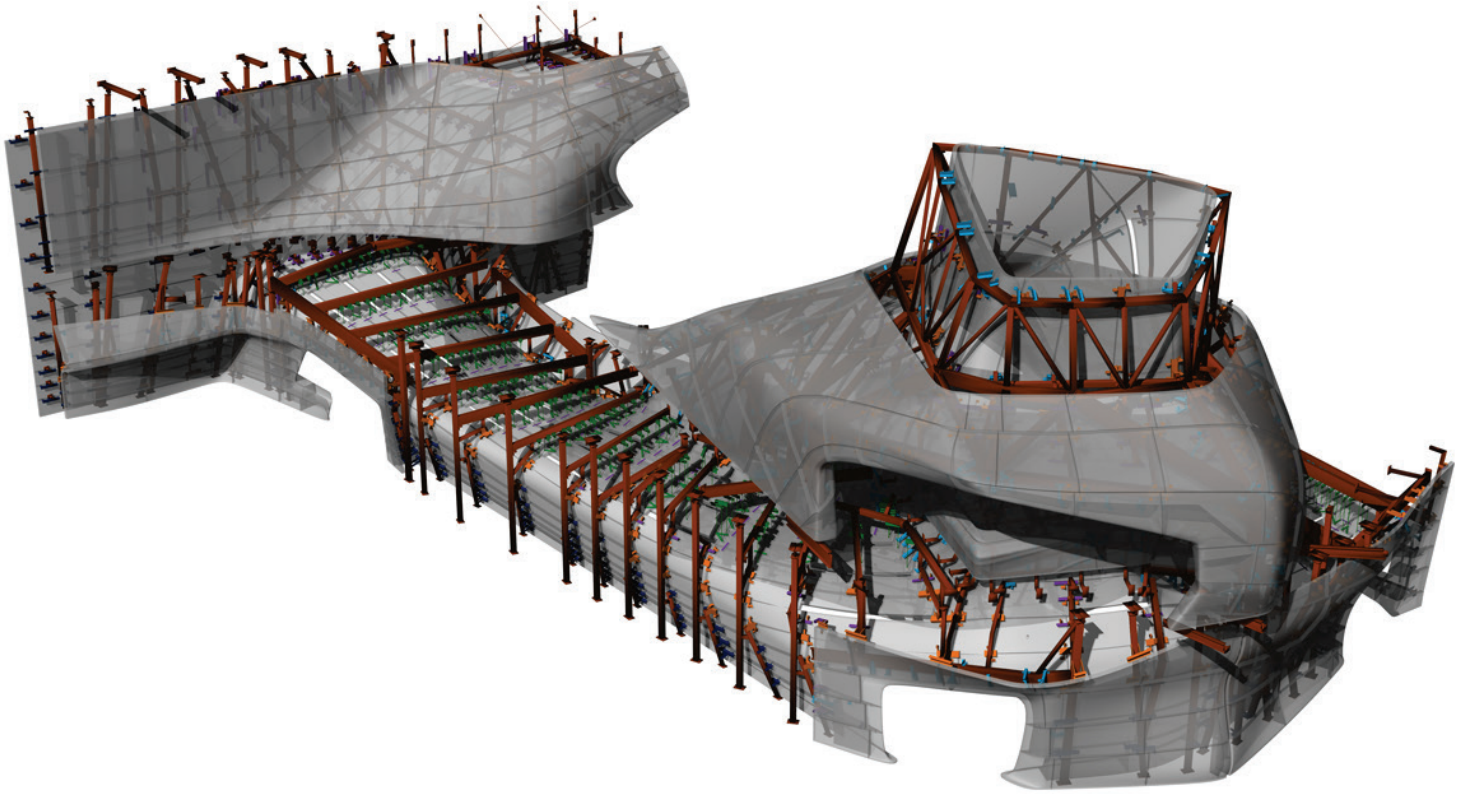
XXXXXXX

BUILDER

XXXXXXX

NOTE:

A hard return (shift-enter) will turn off
"BOLDED"category text to reveal Proxima Nova
Regular. Hit a regular "enter" to start another category
in bold. Delete this text, obviously.







ABC TITLE (START TYPING WITH ABBREV.
FIRST, IT WILL BOLD THE THREE LETTERS
AUTOMAGICALLY)

Credits

TYPE
XXXXX

LOCATION
XXXXXX

SCOPE OF WORK
XXXXX

ARCHITECTURE
XXXXX

ENGINEER CONSULTANTS
XXXXXXX

BUILDER
XXXXXXX

NOTE:

A hard return (shift-enter) will turn off
"BOLDED" category text to reveal Proxima Nova
Regular. Hit a regular "enter" to start another category
in bold. Delete this text, obviously.

